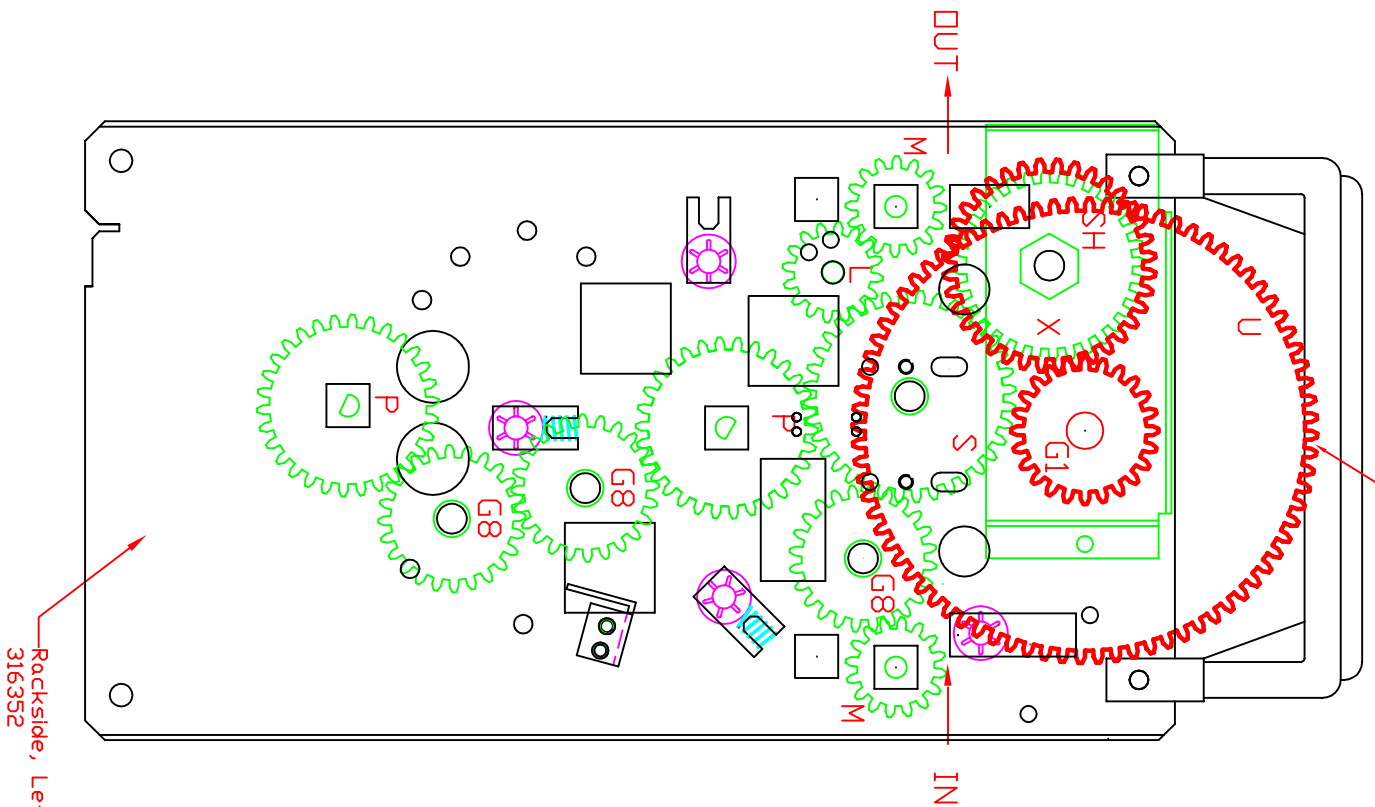
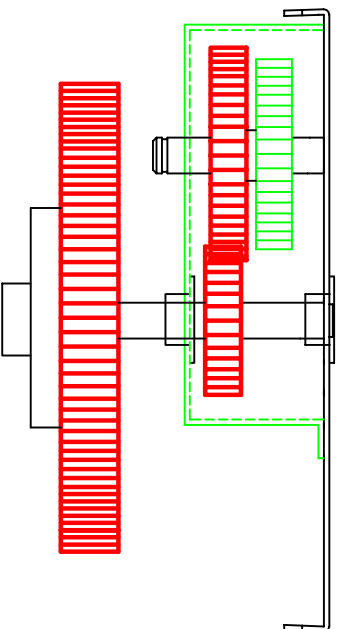


Rackside, left.

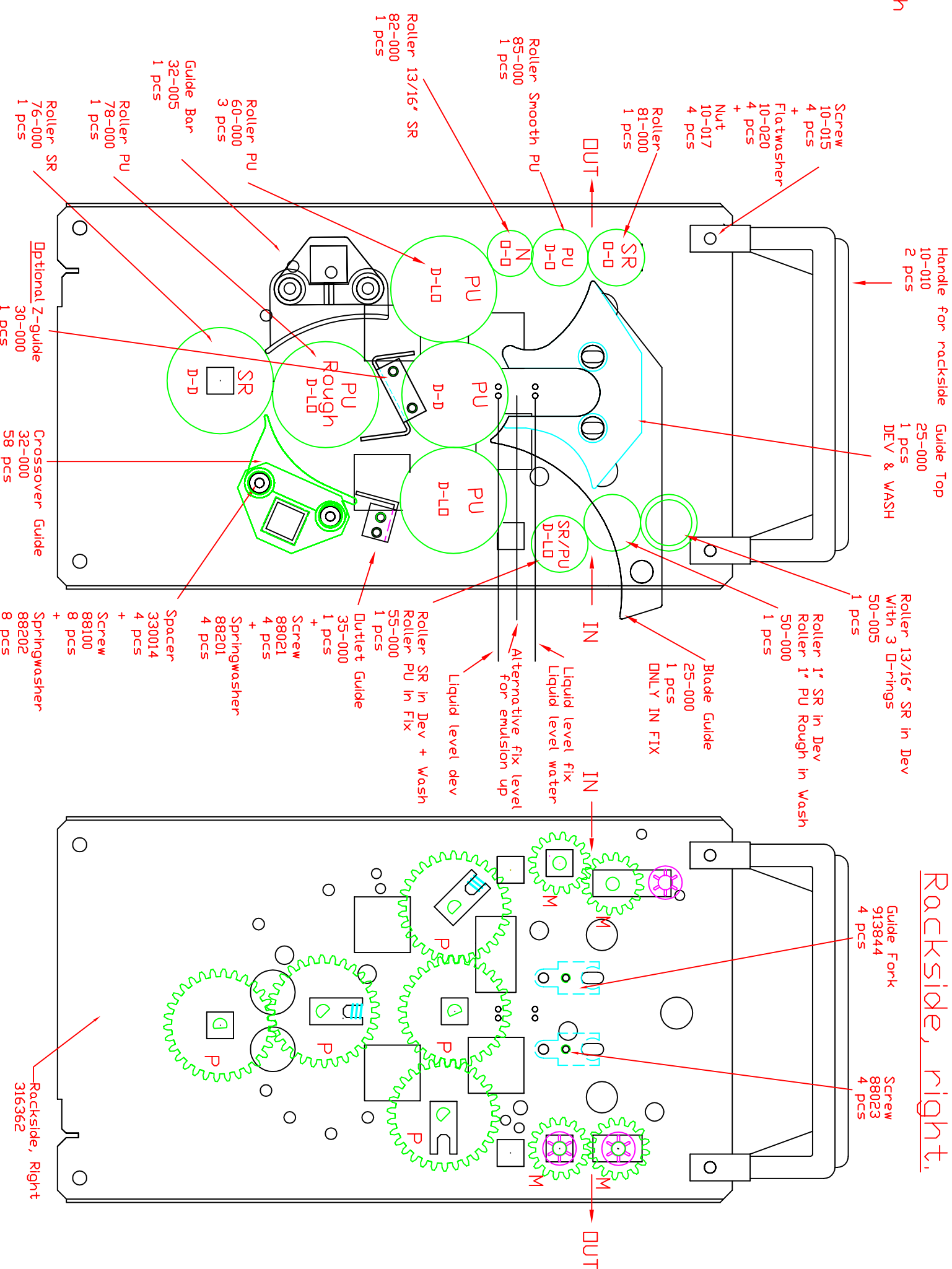
Bold=high



Rackside, Left
316352



Rackside, right.



Rackside, Right
316362

L	65271	16T	Ø 1/4"	1 pcs
M	65270	16T	D 1/4"	5 pcs
G1	276154	24T	Ø 10,2	1 pcs
G8	217164	24T	Ø 10,2	3 pcs
P	65266	30T	1/4" In - D	8 pcs
X	117528	32T	NV 16	1 pcs
SH	117518	36T	NV 16	1 pcs
S	65502	36T	Ø 10mm MSH	1 pcs
U	65139	80T	Ø 10mm MSH	1 pcs

- Handle for rackside 10-010 2 pcs
- Guide Top 25-000 1 pcs
- DEV & WASH 1 pcs
- Roller 13/16" SR in Dev 50-005 1 pcs
- Roller 1" SR in Dev 50-000 1 pcs
- Roller 1" PU Rough in Wash 50-000 1 pcs
- Blade Guide 25-000 1 pcs
- DONLY IN FIX 1 pcs
- Liquid level fix 1 pcs
- Liquid level water 1 pcs
- Alternative fix level for emulsion lip 1 pcs
- Roller SR in Dev + Wash 55-000 1 pcs
- Roller PU in Fix 35-000 1 pcs
- Outlet Guide 1 pcs
- Spacer 330014 4 pcs
- Screw 88021 4 pcs
- Springwasher 88201 4 pcs
- Springwasher 88202 8 pcs
- Crossover Guide 32-000 58 pcs
- Optional Z-guide 30-000 1 pcs
- Roller SR 76-000 1 pcs
- Roller PU 78-000 1 pcs
- Guide Bar 32-005 1 pcs
- Roller PU 60-000 3 pcs
- Roller 13/16" SR 82-000 1 pcs
- Roller Smooth PU 85-000 1 pcs
- Roller 81-000 1 pcs
- Nut 10-017 4 pcs
- Flatwasher 10-020 4 pcs
- Screw 10-015 4 pcs

A - K6 9603 - Vendevalser ombyttet PU øverst SR nederst vandret fJeder fJerner, vendeguide ud 117598,05.06.2002-CV

This Document contains proprietary data of Echo Graphic.
No information, reproduction or use of any part thereof may be used without written permission.
Tolerance unless otherwise specified : machined surfaces DS 2768-1 measurements under 120mm after folding F0.5

More Than Tol. Surface Treatment :

(0,5)	6	0,1	+
(6)	30	0,2	
(30)	120	0,3	
(120)	315	0,5	
(315)	1000	0,8	
(1000)	2000	1,2	

Name : D/F/W rack 114cm
R2 w. guide

Designer : CV
Drawn : CV
Date : 11.01.02
Scale : 1:1,5

Kmr :
Drawing no. : 330489

Echo Graphic
Håndværkervej 2-6
DK-9560 Hadsund Danmark
Telefon 98571955
Telefax 98571591