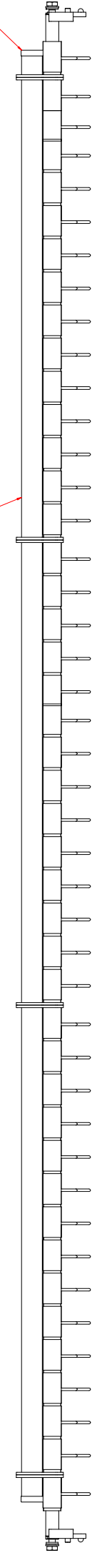
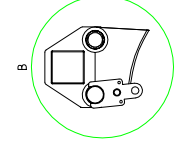
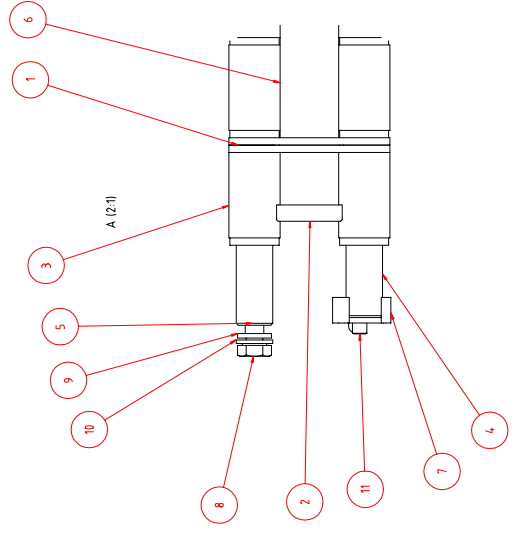
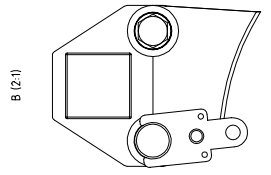
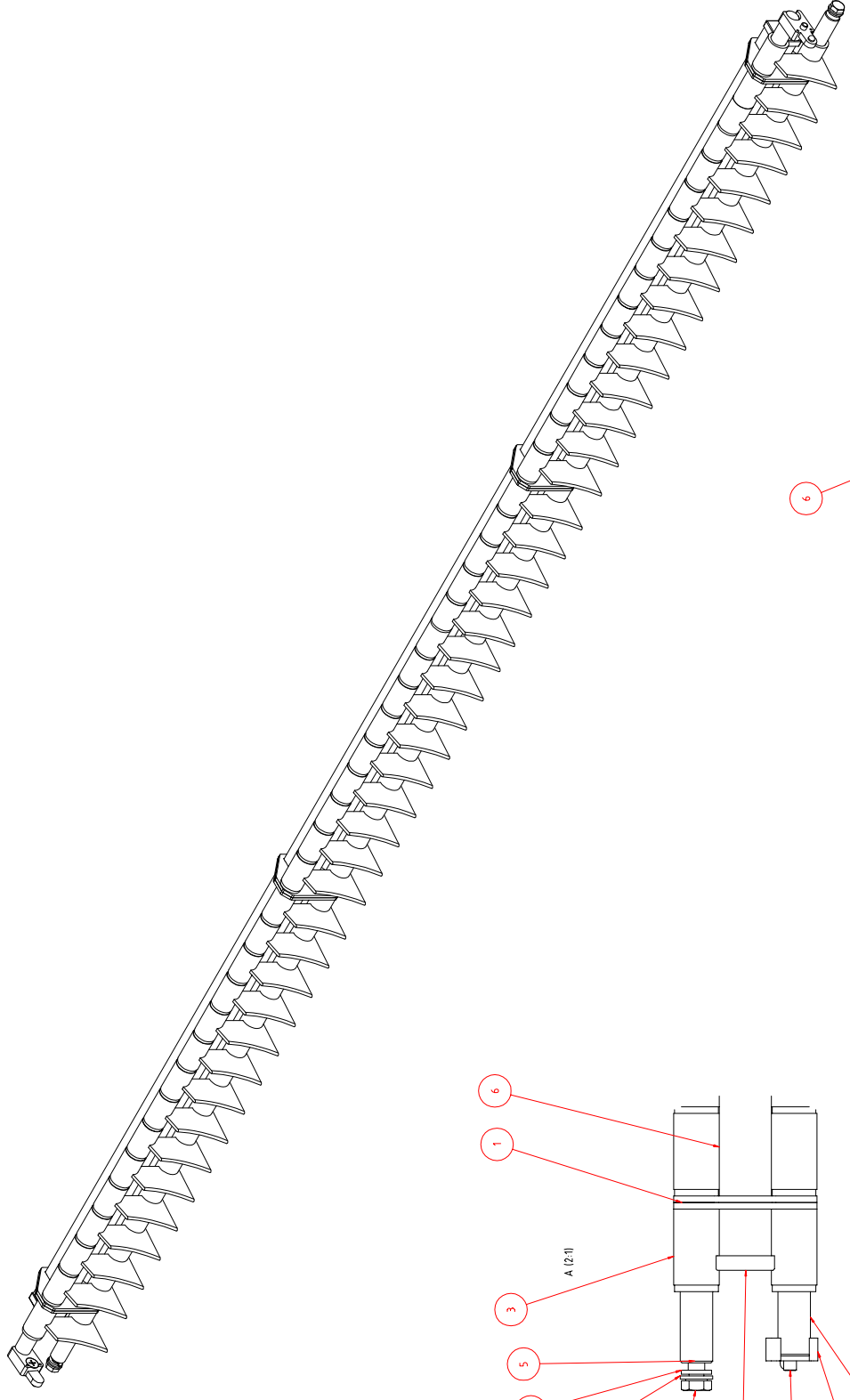
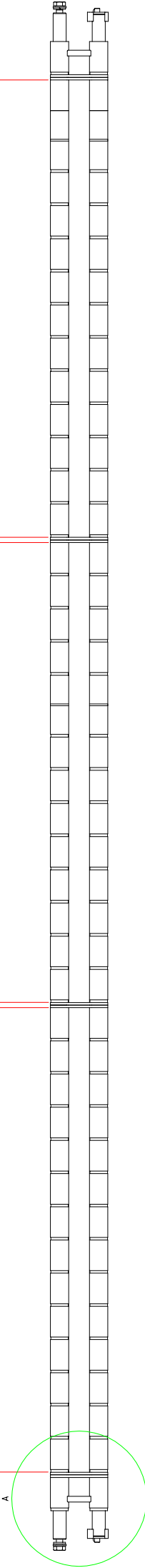


1 2 3 4 5 6 7 8 9 10 11 12 13 14 15 16

Pos.	Dwg/part nr.	Title
1	8 136074	Guide Sup. Crossover f.217144
2	2 217117	End Plug 18x18 mm black
3	44 217144	Crossover Guide water dry
4	1 330010	Spacer $\phi 10 \times 116.8 \text{mm}$ solid 2xM5
5	1 330014	Spacer $\phi 10 \times 116.8 \text{mm}$ solid 2xM5
6	1 330164	Support crossover guides 114
7	2 913844	Guide fork for $\phi 10$ white
8	2 88100	Screw Set Mg 5x10 A4 Din 933
9	2 88202	Spring Washer 5MM A4 Din 127B
10	2 88213	Flat washer 5.3x10x1MMA4 D125A
11	2 88340	Screw M4x10 A4 dfin 965



14 pcs. 14 pcs. 14 pcs.



This document contains proprietary data of Echo Graphic. No part of it may be reproduced or transmitted in any form or by any means, electronic or mechanical, including photocopying, recording, or by any information storage and retrieval system, without written permission from Echo Graphic.

Tolerance unless otherwise specified :
 machined surfaces ISO 2768 - M
 measurements under 120mm after folding
 ±0,5

Echo Graphic

Echo Graphic AS Phone int.: +45 98 57 19 55
 2. Håndværkvej Fax int.: +45 98 57 15 91
 DK 9560 Hørdum e-mail: info@echographic.dk
 www.echographic.dk

11-02-2002	ck	1	1.2
Guide outlet 217144 M5 /white			330635