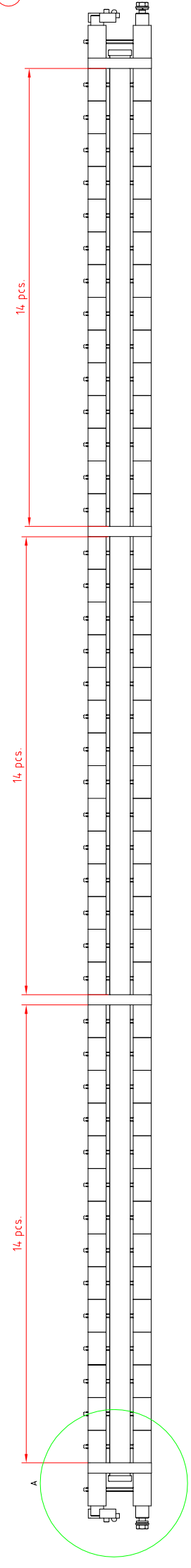
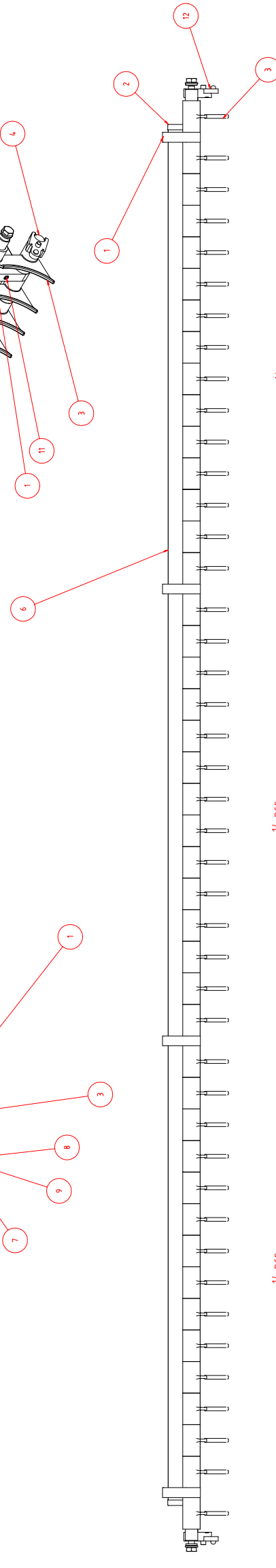
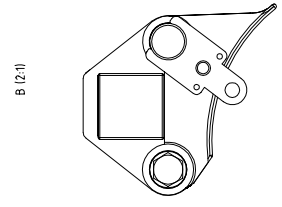
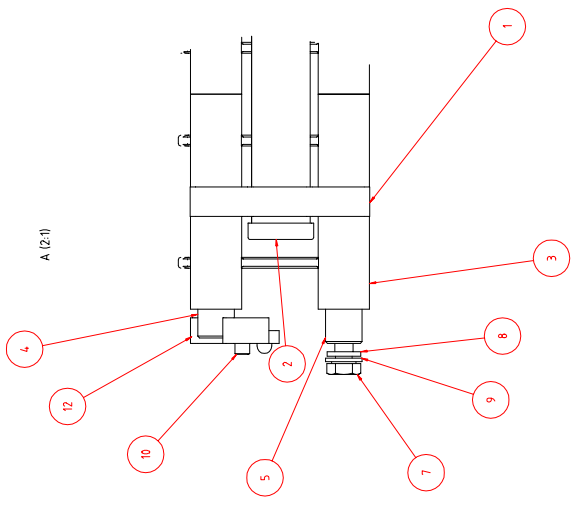


Pos.	Pcs.	Dwg/part nr.	Title
1	4	136155	Guide support f. crossover
2	2	217117	End plug 18x18 mm black
3	44	217154	Cross over guide
4	1	330010	Spacer $\phi 10 \times 116.8 \text{mm}$ solid 2xM5
5	1	330014	Spacer $\phi 10 \times 116.8 \text{mm}$ solid 2xM5
6	1	330164	Support crossover guides 114
7	2	88100	Screw Set Mg 5x10 A4 Din 933
8	2	88202	Spring Washer 5MM A4 Din 127B
9	2	88213	Flat washer 5.3x10x1MM A4 D125A
10	2	88340	Screw M4x10 A4 din 965
11	4	88366	Pinol screw 4Mgx10 Din 916 A4
12	2	913844	Guide fork for $\phi 10$ white



This document contains proprietary data of Echo Graphic. No part of it may be reproduced or transmitted in any form or by any means electronic, mechanical, photocopying, recording, or by any information storage and retrieval system, without permission in writing from Echo Graphic.

Tolerance unless otherwise specified :
 machined surfaces ISO 2768 - M
 measurements under 120mm after folding
 ±0.5

Echo Graphic
 Echo Graphic AS Phone int.: +45 98 57 19 55
 2. Håndværkvej Fax int.: +45 98 57 15 91
 DK 9560 Hørdum e-mail: info@echographic.dk
 Denmark www.echographic.dk

25-01-2002	ck	Guide outlet 217154 M5 /white	330825	-
			A1	1 1.2